



Monitor



Folded shaft



MALÅ Rough terrain cart (RTC) as option



Control unit and antenna



MALÅ Easy Locator

Ground Penetrating Radar for Utility Locating

The MALÅ Easy Locator is an easy to use, entry level Ground Penetrating Radar (GPR) system designed to meet your utility locating needs. The MALÅ Easy Locator is the tool of choice for those who need to quickly and easily identify the presence of buried utility infrastructure, both metallic and non-metallic.

Modern advances in technology, particularly in the design and construction of buried utilities, have resulted in an ever increasing use of non-metallic materials.

Locate professionals know the difficulties associated with non-metallic utilities and that conventional locating tools leave you a few pieces short. So let the MALÅ Easy Locator help you fill in the missing pieces.

GPR is the only technology available that does not require a physical connection to the utility, nor does it rely on radiating electromagnetic (EM) fields that may or may not be present or detectable.

Main Applications

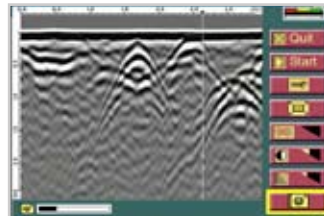
The MALÅ Easy Locator caused a revolution when it was originally released and quickly established itself as the GPR tool of choice for utility applications, such as:

- Utility detection
- Utility mapping
- Underground Storage Tank (UST) detection
- Void detection
- Locate service or illegal connections
- Lost cover, valve, cable box or vault detection
- And more...

Specific Features

The product's simple yet ergonomic and field rugged design, intuitive user interface and clear display is testament to its success and it remains as the number one choice in its field.

- Minimal set up for fast start-up
- Quick and simple one button operation
- Real time locates
- Detects metallic and non-metallic utilities
- Back up cursor for quick and accurate utility marking
- 10.4" colour LCD screen
- Compact, portable and field rugged design – IP65
- Available in nine different languages (English, French, Italian, Spanish, German, Swedish, Norwegian, Russian and Chinese)



System Configuration

With fast start-up and minimal set-up the MALÅ Easy Locator can rapidly be deployed and the user can be out collecting real-time data at full walking speed within minutes of arriving at the job site.

The unique single push / turn button on the monitor, allows for quick and simple operation. A clear easy to read color LCD combined with a back up cursor allows for easy interpretation of data and efficient on-site marking of utilities.

An optional feature allows images of the screen data to be saved in .jpeg format which can then be exported via a USB thumb drive for use in field reports. The hinged shaft design allows the MALÅ Easy Locator to be folded, creating a more compact package for efficient transportation and storage.

Technical Specification

Power supply: Li-Ion 11,1V battery

Operating time: Approx. 5h

Operating temp: -20° to +50°C or 0° to 120 °F

Environmental: IP65

Display: 10.4" Color TFT Ultra-Hi-Brite or trans-reflective LCD

Dim. with wheels: 67x47x19cm / 26"x19"x7"
(excluding handle)

Weight: 18 kg / 40 lb (Shallow), 19 kg / 42 lb (Mid)

Antennas:

Shallow: 500 MHz. Shallow penetration, highest resolution.

Mid: 350 MHz. Deeper penetration, high resolution.

See our webpage for latest information.

Head Office

MALÅ Geoscience AB
Skolgatan 11, SE-930 70
Malå, Sweden
Phone: +46 953 345 50
Fax: +46 953 345 67
E-mail: sales@malags.com

Offices

USA: MALÅ Geoscience USA, Inc., 2040 Savage Rd. Box 80430, Charleston, SC 29416
Phone: +1 843 852 5021, Fax: +1 843 769 7392, E-mail: sales.usa@malags.com

China: MALÅ Geoscience (China), Room 2604, Yuan Chen Xin BLDG, No.12 Yu Min Road Chao Yang District, Beijing 100029
Phone: +86 10 8225 0728, Fax: +86 10 8225 0815, E-mail: sales@malags.com